

LEE RELOADING DIES

COMPLETE INSTRUCTIONS FOR LEE RIFLE DIE SETS

1 Prepare Your Cases

Inspect your cases while lubricating them. Discard all cases with split necks, indications of head separation or other defects. Wipe on a thin film of Lee Case Lubricant with your fingers. Fingers are the best way of lubing a case as any grit that could damage the die is wiped away. **Be sure to lube the inside of the case neck with a cotton swab.** The case may be immediately sized, or let the lube dry.

Lee Lube can be thinned with up to four parts water for easier application and greater economy. If thinned, let the case dry before sizing.

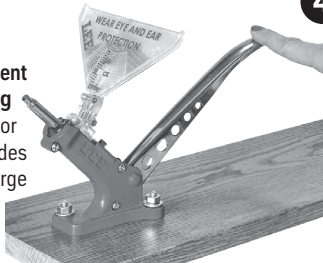
All Lee Dies have finger tighten lock rings that lock to both the die and press. When removing die, always loosen by the lock ring. This insures the lock will maintain its exact setting for future use.



IMPORTANT If for any reason you do not use Lee Resizing Lubricant [90006] be very careful not to contaminate the powder or primers. Other brands are oil base and they have serious, detrimental effects on powder and primers. Because of the stickiness, they also attract grit that can damage the die. Lee Resizing Lubricant costs less and is so superior that it is worth the effort to insist upon it, or order from the factory.

3 Prime

The easiest, most convenient bench mounted priming tool ever. Effortless right or left hand operation. Includes priming assemblies for large and small primers, — you change primer size or shell holders in seconds. Includes the new folding tray —built-in primer flipping feature allows direct filling from large primer boxes.



Lee Auto Bench Prime 90700 Uses the same special, but inexpensive shell holders as the hand-held Lee New Auto-Prime and the Lee Ergo Prime.

5 Bullet Seating Die



ADJUSTING SCREW

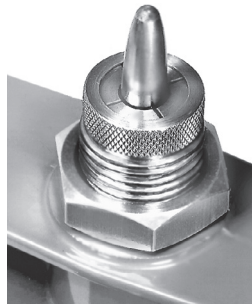
Install a loaded round into the shell holder you wish to duplicate. Raise the ram to the top of the stroke and hold. Screw the bullet seating die in until it stops turning; release the lever, thread in additional 1/8 turn. Finger tighten lock ring. Now, screw the bullet seating adjusting screw in until you feel it touch the tip of the bullet. Your die is set. Bullets should be seated deep enough to work through the gun's action. See MAXIMUM OVERALL LENGTH on load data. If more crimp is desired, screw die in slightly and test until proper crimp is formed. Cases must be trimmed to the same length to provide a uniform crimp. Excessive crimp causes the bullet seater to deform soft nose bullets.

CAUTION

Seating bullets excessively deep will reduce the case capacity and increase the pressure.

6 Factory Crimp™ Die

(NOT INCLUDED WITH LIMITED PRODUCTION DIES)

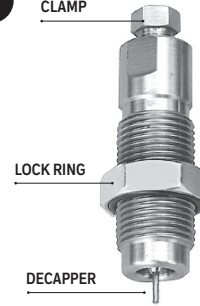


FACTORY CRIMP IS A TRADEMARK OF LEE PRECISION, INC.

Screw the Lee Factory Crimp Die in to touch the shell holder, plus 1/2 turn more. Adjust in for a heavier crimp. It is usually best to start with too little crimp, as you can readjust and crimp again to suit your needs. When the four splits in the collet are closed, maximum crimp has been achieved. Do not try for more as the die will be damaged and the crimp excessive.

Bullets do not need a crimp groove as the Lee Factory Crimp Die will form one while crimping. However, it requires a harder push on the press lever to form the crimp.

2 DECAPPER CLAMP

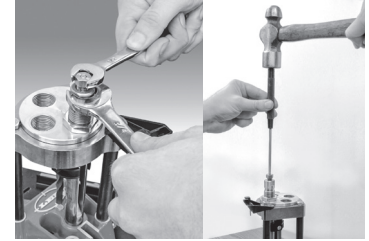


Full Length Sizer Screw the full length sizer in until it touches the shell holder. Then lower the ram and screw the die in 1/4 to 1/3 turn more. Raise the ram and tighten the lock ring finger tight.

The decapper is retained by a collet. Should it be overstressed by an obstruction; it simply slides up without damage. To reset, loosen the decapper clamp and position the decapper flush with clamp end and retighten.

Considerable torque may be necessary.

A 1/2" and 3/4" wrench are necessary.



Stuck Case If a case is not lubricated, the rim will be pulled off and the case remains stuck in the die. If this happens — **loosen, but do not remove the decapper clamp with a 3/4" and 1/2" wrench.** Use a 3/16" drift punch and large hammer (1-lb. or larger) to tap on the decapper rod and drive the stuck case free. Unable to remove? We offer replacement full length sizing dies on our website at 50% off. Add a rifle full length sizing die to shopping cart, and use this coupon code at checkout LEELEUBEWORKS.

Lee Safety Powder Scale 90681

It is the easiest to use, most accurate and sensitive powder scale. The exclusive safety beam has a stainless steel razor edge for maximum sensitivity. You can be sure that the Lee Safety Scale will retain its original factory accuracy for as long as it is not physically broken.



HAVE A BREECH LOCK PRESS?

You may want bushings. Breech Lock bushings fit all Lee Breech Lock presses. Allows instant, accurate die changes.



LOCK RING ELIMINATOR
Breech lock quick change bushing with integral lock collar provides unmatched precision and convenience when adjusting dies. Split clamp positively locks die into position.
90063 2 Pack

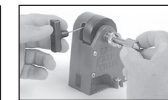
Check Your Cases



After a few loadings, cases tend to get longer. This could be dangerous if the case were so long that it would pinch the bullet in the end of the chamber. Pressure high enough to damage the gun could result. The simplest way to check the case and trim to the correct length is with the Lee Case Trimmer.



Trim the case using the Lee Case Trimmer



Chamfer the case inside and out



Polish case with steel wool, scouring pad or crocus cloth